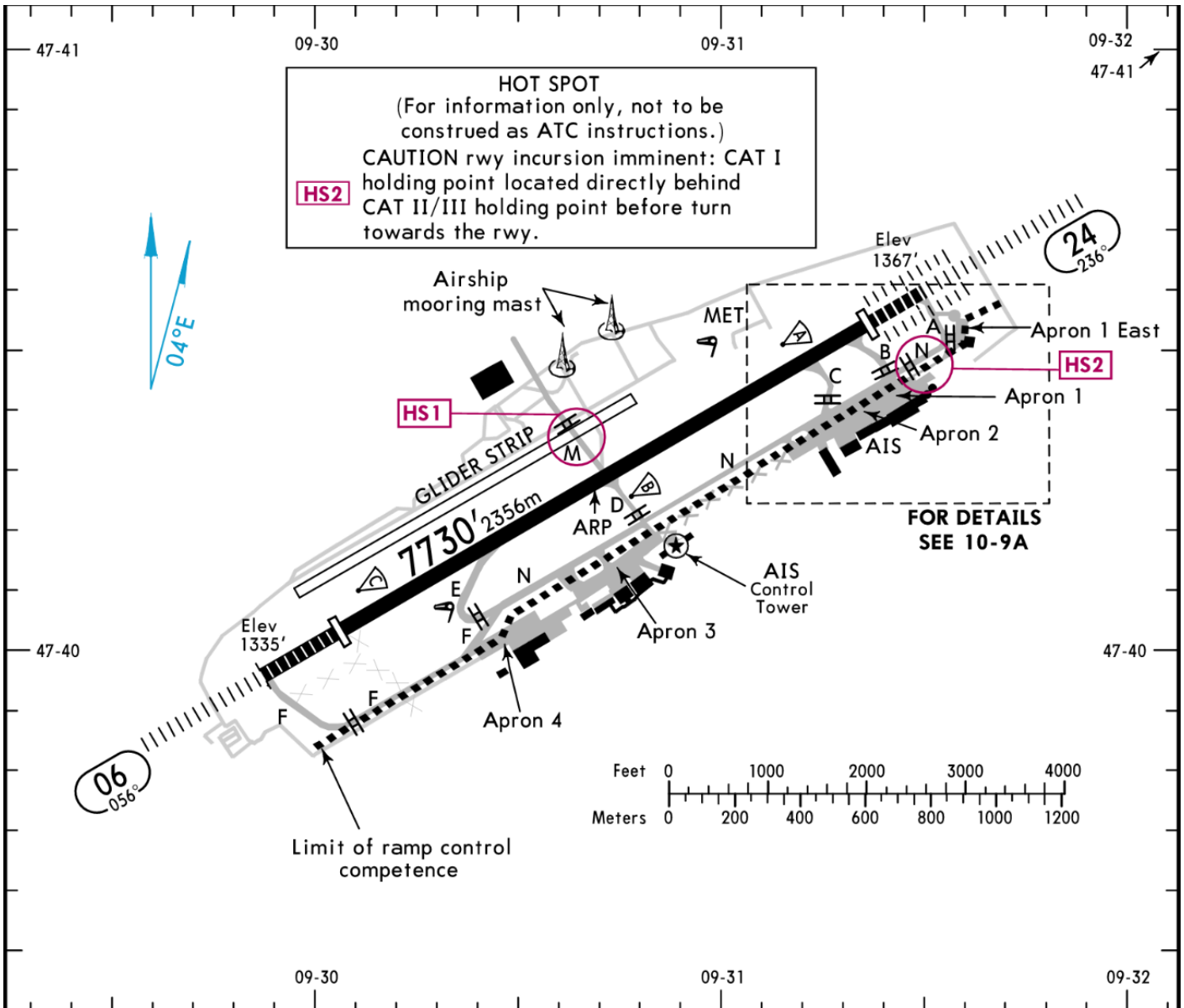


# Layout



## GENERAL

Rwy 24 approved for CAT II/III operations, special aircrew and acft certification required.

**CAUTION:** Birds in vicinity of airport.  
Glider activity on weekends and holidays.

EDNY features a compact and straightforward airport layout with a single runway and a relatively small apron environment. The airport infrastructure is optimized for regional and short-haul operations, resulting in short taxi distances and simple ground routing procedures.

The passenger terminal and main commercial apron are located south of the runway. Commercial airliner operations are primarily conducted from stands 201 to 203, which are the only dedicated airliner parking positions at the airport. All stands are configured for taxi-in and taxi-out operations,

meaning no pushback procedures are required.

General aviation facilities and smaller parking areas are located southwest of the main commercial apron. Helicopter and business aviation traffic can frequently be observed in these areas, especially during seasonal traffic peaks and regional events.

Taxiway infrastructure at EDNY is limited but efficient, with direct apron access to the runway and minimal routing complexity. Due to the compact airport design, taxi times are usually very short and rarely exceed a few minutes under normal traffic conditions.

The runway is oriented roughly perpendicular to the Lake Constance shoreline, creating visually distinctive arrival and departure environments. During RWY 06 operations, aircraft are frequently vectored along the lakeside shoreline before turning northbound onto final approach. The open lake area south of the airport provides excellent visual references during both arrivals and departures, while rising terrain becomes increasingly visible further towards Austria and the Alpine region.

Due to the limited apron space and compact maneuvering areas, situational awareness during ground operations remains important, particularly during online network events or periods of increased general aviation activity.

---

Revision #4

Created 2026-04-26 13:40:36 UTC by Jonas

Updated 2026-05-26 23:20:38 UTC by Jonas